

YWCA Rhode Island  
514 Blackstone Street, Woonsocket, RI 02895  
T: 401-769-7450 | F: 401-769-7454  
www.ywcari.org

**ANNUAL MEMBERSHIP**

6 to 16 years: \$12  
17 to 64 years: \$22  
65 and over: \$17

*Children under 6 must be covered by a parent or guardian membership. Membership fees are not refundable or deductible as a charitable contribution. Reduced rates are available in some classes for members 65 and over. All classes and activities are open to both sexes unless otherwise indicated in the class description. A member may use the membership card at all other YWCAs in the USA.*

YWCA membership, paid yearly, is required for participation in all programming except as otherwise indicated. Special non-member fees are available for some adult programs. Men and boys are welcome as associates. As a YWCA member, you have access to:

- low cost, innovative programs
- special membership events
- volunteer opportunities
- use of YWCA facilities nationwide
- membership in oldest, largest women's movement in the nation

**HOURS**

Monday to Thursday, 9am-9pm  
Friday 9am-6:30pm, Saturday 9am-4:30pm  
*Child Care Hours: Monday to Friday, open at 6:30am (arrange with program director).*

**TOURS**

New to YWCA?  
Call for more information or to schedule a tour, 769-7450.

**SCHEDULE**

Classes run in consecutive sessions during the school year with a new schedule for summer.

**ROOM RENTALS**

Room rentals are available for events.  
Contact YWCA for details, 769-7450.

**STORM POLICY**

For YWCA cancellations and closing announcements, listen to radio stations WOON 1240 AM & WNRI 1380 AM or watch Channel 6, 10 & 12. School system delays, early dismissals, and professional days do not apply to YWCA schedule.

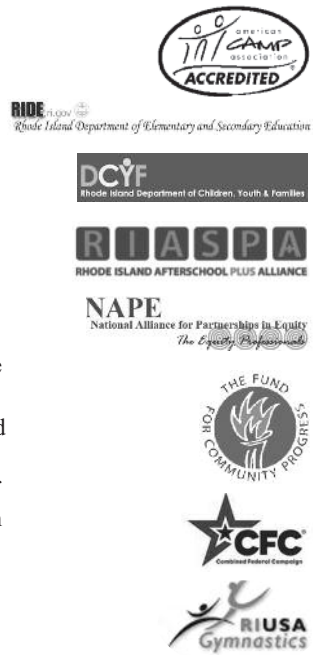
**EVENTS**

- **April 28, Women Holding Office, 6<sup>th</sup> Annual:** 6-8pm at Kirkbrae Country Club in Lincoln. Keynote Speaker: Rosie Hidalgo. Isabelle Ahearn O'Neil Award, 2014 recipient: Kathryn O'Hare, Ph.D. Tickets: \$25. www.ywcari.org/who
- **May 8, Mother's Day Breakfast:** From 9:30-11:30am, for students in the Parenting In Progress program.
- **May 9, Preschool Open House:** From 9:30-11am at YWCA. Parents and children are welcome to explore classrooms, meet teachers and receive a tour of the facility. Additional Open House Date: June 3 from 5-7:30pm.
- **June 11, Parenting In Progress Graduation and Awards**

- Ceremony, 30<sup>th</sup> Annual:** At 11am in YWCA Activity Center
- **June 20, Gymnastics Spring Show:** Details TBA.
- **July 20, Golf Tournament, 20<sup>th</sup> Annual:** Support YWCA as a player, sponsor or raffle prize donor. 1pm Shotgun at Foster Country Club to benefit ENCOREplus®. Register online, www.ywcari.org. Contact: Holly Courtemanche at 769-7450.
- **Register today for 2014-2015 School Year:** Now enrolling for Pre-Preschool, Preschool, Before/After Kindergarten Care, and Before/After School Age Care.

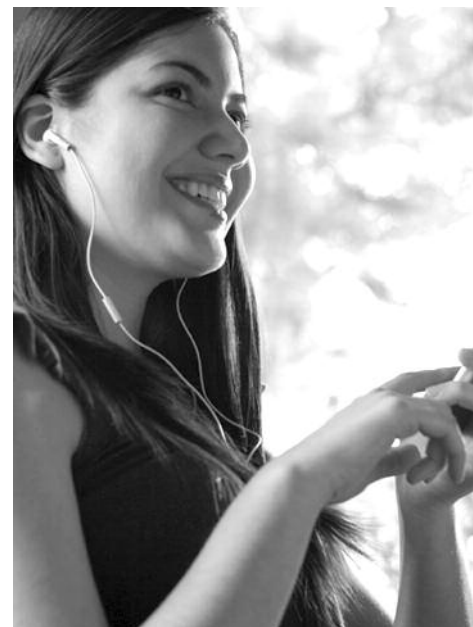
**NOTABLE**




- YWCA is a recipient of an Outstanding Neighborhood Planning Award from the American Planning Association - RI Chapter
- American Camp Association Accredited
- Licensed by Rhode Island Department of Education
- Licensed by Rhode Island Department of Children, Youth, and Families
- Member of RI Afterschool Plus Alliance
- Member of National Alliance for Partnerships in Equity
- Member Agency of The Fund for Community Progress
- Participating Organization of Combined Federal Campaign
- USA Gymnastics Certified Coaches
- Sponsor of the Sheila Skip Nowell Leadership Academy



**YWCA Rhode Island**

Donate. Act. Connect.



-  Like: YWCA Rhode Island
-  Follow: @ywca\_ri
-  Subscribe: YWCA Rhode Island

**BOARD OF DIRECTORS**

- Cathy Brien, Chair
- Marissa Trinque, 1st Vice Chair
- Kim Garneau, 2nd Vice Chair
- Susan Gershkoff, Esq., Treasurer/Secretary
- Carla Bisbano
- Rosemary Brite
- Alessandra Borges
- Sandra Cano
- Lisa Carcifero
- Gail Davis
- Susan Donahue, DC
- Karen Gager
- Stephanie Gonzalez
- Jeanne Lynch
- Monica Neronha
- Nancy Wilson
- Deborah L. Perry, President/CEO